

COURSE OVERVIEW DE0998
Production Logging Interpretation in Techlog

Course Title

Production Logging Interpretation in Techlog

Course Date/Venue

Session 1: February 09-13, 2025/Boardroom 1,
 Elite Byblos Hotel Al Barsha, Sheikh
 Zayed Road, Dubai, UAE

Session 2: August 11-15, 2025/Fujairah Meeting
 Room, Grand Millennium Al Wahda
 Hotel, Abu Dhabi, UAE



Course Reference

DE0998



Course Duration/Credits

Five days/3.0 CEUs/30 PDHs

Course Description



This practical and highly-interactive course includes real-life case studies and exercises where participants will be engaged in a series of interactive small groups and class workshops.



This course is designed to provide participants with a detailed and up-to-date overview of Advanced TECLOG. It covers the techlog interface and data structure; the data import and export; data management and quality control techniques; multiwell management; variable managements, units, families and alias; and references management.



During this interactive course, participants will learn the visualization using basic and advance plotting tools for single and multiwell layouts and plots; zonation and zonation management and markers; depth interaction and interactive selections; data editor, 2D and 3D well trajectories and basemap; depth shifting and variables splice tool; interpretation workflows using application workflow interface, AWI; and report editor.

In this course, you discover the Techlog™ interactive suite, which brings all of your wellbore data together in a collaborative wellbore platform environment. You learn about the data model within the Techlog platform and the foundation utilities for importing, exporting, manipulating, and displaying data in the system, including core and images. You explore the principles behind the powerful application workflow interface by creating workflows for single and multiwell use.

Course Objectives

Upon the successful completion of this course, each participant will be able to:-

- Apply and gain in-depth knowledge in advanced techlog
- Discuss the techlog interface and data structure
- Understand the data import and export
- Identify data management and quality control techniques
- Implement multiwell management
- Summarize variable managements, units, families and alias
- Introduce references management
- Recognize visualization using basic and advance plotting tools for single and multiwell layouts and plots
- Understand zonation and zonation management and markers
- Define depth interaction and interactive selections
- Describe data editor, 2D and 3D well trajectories and basemap
- Demonstrate depth shifting and variables splice tool
- Create interpretation workflows using application workflow interface, AWI
- Explain report editor

Exclusive Smart Training Kit - H-STK®



*Participants of this course will receive the exclusive “Howard Smart Training Kit” (H-STK®). The H-STK® consists of a comprehensive set of technical content which includes **electronic version** of the course materials conveniently saved in a **Tablet PC**.*

Who Should Attend

This course provides an overview of all significant aspects and considerations of the advanced TECLOG for development and exploration log analysts, petrophysicists, geologists, petroleum engineers, managers, and technical personnel with no prior experience using techlog

Course Fee

US\$ 8,000 per Delegate + **VAT**. This rate includes H-STK® (Howard Smart Training Kit), buffet lunch, coffee/tea on arrival, morning & afternoon of each day

Accommodation


Accommodation is not included in the course fees. However, any accommodation required can be arranged at the time of booking.

Course Certificate(s)


Internationally recognized certificates will be issued to all participants of the course.

Certificate Accreditations

Certificates are accredited by the following international accreditation organizations: -

- 
British Accreditation Council (BAC)

Howard Technology is accredited by the **British Accreditation Council** for **Independent Further and Higher Education** as an **International Centre**. BAC is the British accrediting body responsible for setting standards within independent further and higher education sector in the UK and overseas. As a BAC-accredited international centre, Howard Technology meets all of the international higher education criteria and standards set by BAC.

- 
The International Accreditors for Continuing Education and Training (IACET - USA)

Howard Technology is an Authorized Training Provider by the International Accreditors for Continuing Education and Training (IACET), 2201 Cooperative Way, Suite 600, Herndon, VA 20171, USA. In obtaining this authority, Howard Technology has demonstrated that it complies with the **ANSI/IACET 2018-1 Standard** which is widely recognized as the standard of good practice internationally. As a result of our Authorized Provider membership status, Howard Technology is authorized to offer IACET CEUs for its programs that qualify under the **ANSI/IACET 2018-1 Standard**.

Howard Technology's courses meet the professional certification and continuing education requirements for participants seeking **Continuing Education Units (CEUs)** in accordance with the rules & regulations of the International Accreditors for Continuing Education & Training (IACET). IACET is an international authority that evaluates programs according to strict, research-based criteria and guidelines. The CEU is an internationally accepted uniform unit of measurement in qualified courses of continuing education.

Howard Technology Middle East will award **3.0 CEUs** (Continuing Education Units) or **30 PDHs** (Professional Development Hours) for participants who completed the total tuition hours of this program. One CEU is equivalent to ten Professional Development Hours (PDHs) or ten contact hours of the participation in and completion of Howard Technology programs. A permanent record of a participant's involvement and awarding of CEU will be maintained by Howard Technology. Howard Technology will provide a copy of the participant's CEU and PDH Transcript of Records upon request.

Training Methodology

All our Courses are including **Hands-on Practical Sessions** using equipment, State-of-the-Art Simulators, Drawings, Case Studies, Videos and Exercises. The courses include the following training methodologies as a percentage of the total tuition hours:-

- 30% Lectures
- 20% Practical Workshops & Work Presentations
- 30% Hands-on Practical Exercises & Case Studies
- 20% Simulators (Hardware & Software) & Videos

In an unlikely event, the course instructor may modify the above training methodology before or during the course for technical reasons.





Course Instructor(s)

This course will be conducted by the following instructor(s). However, we have the right to change the course instructor(s) prior to the course date and inform participants accordingly:



Mr. Stan Constantino, MSc, BSc, is a Senior Petroleum & Reservoir Engineer with over 35 years of Offshore & Onshore extensive experience within the Oil, Gas & Petroleum industries. His area of expertise include Reserves & Resources, Reserves Estimation & Uncertainty, Reservoir Characterization, Unconventional Resource & Reserves Evaluation, Oil & Gas Reserves Estimation, Methods for Aggregation of Reserves & Resources, Fractured Reservoir Classification & Evaluation, Sequence Stratigraphy, Petrophysics & Rock Properties, Seismic Technology, Geological Modelling, Water Saturation, Crude Oil & Natural Gas Demand,

Exploration Agreements & Financial Modelling, Seismic Survey Evaluation, Exploration Well Identification, Field Production Operation, Field Development Evaluation, Crude Oil Marketing, Core & Log Data Integration, Core Logging, Advanced Core & Log Integration, Well Logs & Core Analysis, Advanced Petrophysics/Interpretation of Cased Hole Logs, Cased Hole Formation Evaluation, Cased Hole Formation Evaluation, Cased Hole Evaluation, Cased-Hole Logging, Applied Production Logging & Cased Hole & Production Log Evaluation, Cased Hole Logging & Formation Evaluation, Open & Cased Hole Logging, Screening of Oil Reservoirs for Enhanced Oil Recovery, Enhanced Oil Recovery, Enhanced Oil Recovery Techniques, Petroleum Economic Analysis, Oil Industry Orientation, Oil Production & Refining, Crude Oil Market, Global Oil Supply & Demand, Global Oil Reserves, Crude Oil Types & Specifications, Oil Processing, Oil Transportation-Methods, Oil & Gas Exploration and Methods, Oil & Gas Extraction, Technology Usage in Industrial Security; Upstream, Midstream & Downstream Operations; Oil Reservoir Evaluation & Estimation, Oil Supply & Demand, Oil Contracts, Government Legislation & Oil Contractual Agreements, Oil Projects & Their Feasibility (revenue and profitability), Water Flooding, Reservoir Souring & Water Breakthrough, Reservoir Performance Using Classical Methods, Fractured Reservoir Evaluation & Management, Reservoir Surveillance & Management, Reservoir Engineering & Simulation, Reservoir Monitoring, Pressure Transient Testing & Reservoir Performance Evaluation, Reservoir Characterization, Reservoir Engineering Applications with ESP and Heavy Oil, Reservoir Volumetrics, Water Drive Reservoir, Reserve Evaluation, Rock & Fluid Properties, Fluid Flow Mechanics, PVT Analysis, Material Balance, Darcy's Law & Applications, Radial Flow, Gas Well Testing, Natural Water Influx, EOR Methods, Directional Drilling, Drilling Production & Operations, Field Development & Production of Oil & Gas, Wireline Logging, Mud Logging, Cased Hole Logging, Production Logging, Slick Line, Coil Tubing, Exploration Wells Evaluation, Horizontal Wells, Well Surveillance, Well Testing, Design & Analysis, Well Testing & Oil Well Performance, Well Log Interpretation (WLI), Formation Evaluation, Well Workover Supervision, Pressure Transient Analysis and Petrophysical Log Analysis. Currently, he is the CEO & Managing Director of Geo Resources Technology wherein he is responsible in managing the services and providing technical supports to underground energy related projects concerning field development, production, drilling, reservoir engineering and simulation.

Throughout his long career life, Mr. Stan has worked for many international companies such as the Kavala Oil, North Aegean Petroleum Company and Texaco Inc., as the Managing Director, Operations Manager, Technical Trainer, Training Consultant, Petroleum Engineering & Exploration Department Head, Assistant Chief Petroleum Engineer, Reservoir Engineer, Resident Petroleum Engineer, Senior Petroleum Engineer and Petroleum Engineer wherein he has been managing the evaluation of exploration wells, reservoir simulation, development training, production monitoring, wireline logging and well testing including selection and field application of well completion methods.

Mr. Stan has a Master's degree in Petroleum Engineering and a Bachelor's degree in Geology from the New Mexico Institute of Mining & Technology (USA) and from the Aristotelian University (Greece) respectively. Further, he is a Certified Instructor/Trainer, a Certified Internal Verifier/Assessor/Trainer by the Institute of Leadership of Management (ILM) and a member of the Society of Petroleum Engineers, USA (SPE), Society of Well Log Professional Analysts, USA (SPWLA) and European Association of Petroleum Geoscientists & Engineers (EAGE). Moreover, Mr. Stan published numerous scientific and technical papers and delivered various trainings, courses and workshops worldwide.





Course Program

The following program is planned for this course. However, the course instructor(s) may modify this program before or during the course for technical reasons with no prior notice to participants. Nevertheless, the course objectives will always be met:

Day 1

0730 - 0800	Registration & Coffee
0800 - 0815	Welcome & Introduction
0815 - 0830	PRE-TEST
0830 - 0930	<i>Explore the Techlog Interface & Data Structure</i>
0930 - 0945	Break
0945 - 1100	<i>Data Import & Export</i>
1100 - 1230	<i>Data Management & Quality Control Techniques</i>
1230 - 1245	Break
1245 - 1420	<i>Data Management & Quality Control Techniques (cont'd)</i>
1420 - 1430	Recap
1430	Lunch & End of Day One

Day 2

0730 - 0930	<i>Implement Multiwell Management</i>
0930 - 0945	Break
0945 - 1100	<i>Variable Managements, Units, Families & Alias</i>
1100 - 1230	<i>References Management</i>
1230 - 1245	Break
1245 - 1330	<i>References Management (cont'd)</i>
1420 - 1430	Recap
1430	Lunch & End of Day Two

Day 3

0730 - 0930	<i>Visualization Using Basic & Advance Plotting Tools for Single & Multiwell Layouts & Plots</i>
0930 - 0945	Break
0945 - 1100	<i>Zonation & Zonation Management & Markers</i>
1100 - 1215	<i>Depth Interaction & Interactive Selections</i>
1215 - 1230	Break
1230 - 1420	<i>Depth Interaction & Interactive Selections (cont'd)</i>
1420 - 1430	Recap
1430	Lunch & End of Day Three

Day 4

0730 - 0930	<i>Data Editor</i>
0930 - 0945	Break
0945 - 1100	<i>2D & 3D Well Trajectories</i>
1100 - 1215	<i>Basemap</i>
1215 - 1230	Break
1230 - 1420	<i>Basemap (cont'd)</i>
1420 - 1430	Recap
1430	Lunch & End of Day Four

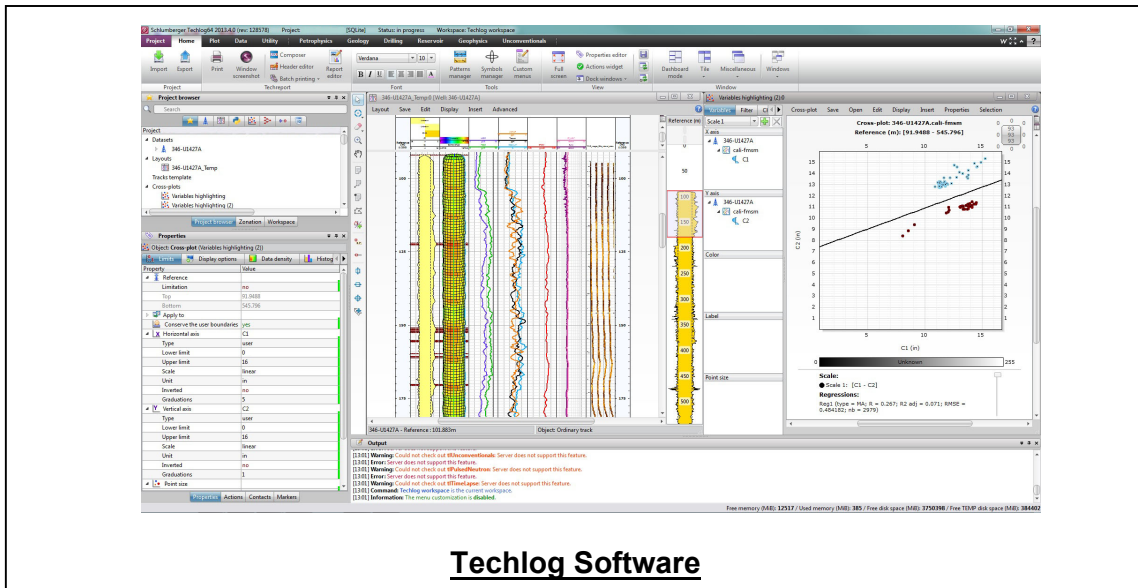


Day 5

0730 – 0930	Depth Shifting & Variables Splice Tool
0930 – 0945	Break
0945 – 1130	Create Interpretation Workflows Using Application Workflow Interface, AWI
1130 - 1230	Report Editor
1230 - 1245	Break
1245 - 1345	Report Editor (cont'd)
1345 – 1400	Course Conclusion
1400 – 1415	POST-TEST
1415 – 1430	Presentation of Course Certificates
1430	Lunch & End of Course

Simulator (Hands-on Practical Sessions)

Practical session will be organized during the course for delegates to practice the theory learnt. Delegates will be provided with an opportunity to carryout various exercises using the simulator “Techlog”.



Techlog Software

Course Coordinator

Mari Nakintu, Tel: +971 2 30 91 714, Email: mari1@haward.org

