

COURSE OVERVIEW OE0053

Standards of Training, Certification & Watchkeeping (STWC)

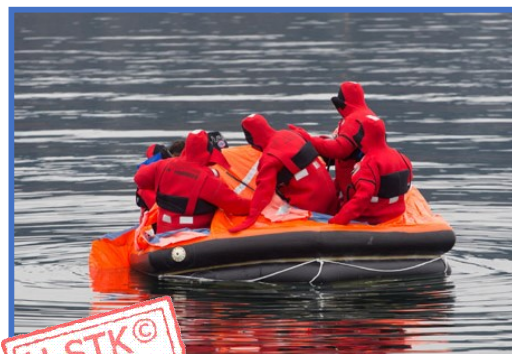
Course Title

Standards of Training, Certification & Watchkeeping (STWC)

Course Date/Venue

Session 1: January 19-23, 2025/Boardroom 1, Elite Byblos Hotel Al Barsha, Sheikh Zayed Road, Dubai, UAE

Session 2: July 21-25, 2025/Ajman Meeting Room, Grand Millennium Al Wahda Hotel, Abu Dhabi, UAE



Course Reference

OE0053

Course Duration/Credits

Five days/3.0 CEUs/30 PDHs



Course Description



This practical and highly-interactive course includes various practical sessions and exercises. Theory learnt will be applied using “MS-Excel” application.



This course is designed to provide participants with a detailed and up-to-date overview of standards of training, certification and watchkeeping for seafarers (STCW). It covers the STCW convention, the layout of the convention, deadlines to meet, glossary of terms and the additional definitions and requirements of the amended STCW convention; the certification requirements, certification paths and general requirements for officers and ratings; and the certificates and general requirements by rank that include master, chief mate, officer in charge of a navigational watch and ratings forming part of a navigational watch, able seafarer deck, radio operators, chief engineer, second engineer, officer in charge of an engineering watch and electro-technical officer.



Further, this course will also discuss the ratings forming part of an engineering watch, able seafarer engine, electro-technical ratings and any other crew member; and the other certificates for personnel on any type of ship, additional non mandatory training for personnel on tankers and passenger ships.

During this interactive course, participants will learn the education and training issues, simulator training under STCW, english language requirements and the use of distance learning and e-learning; onboard training and assessment, responsibilities of companies, implementation of the ISM Code relevant to STCW, GMDSS (global maritime distress and safety system) certificates and medical fitness standards; the onboard requirements, the certificates and documentary evidence to be carried on board; the mandatory safety and ship-board familiarization training, on-board training and assessment and seagoing service; avoiding alcohol and drug consumption, control provisions, penalties and regulations affecting watch-keeping personnel duty; and the implications of amendments to STCW holders, upgrading and revalidation and additional competence requirements under 2010 STCW.

Course Objectives

Upon the successful completion of this course, each participant will be able to:-

- Apply and gain a good working knowledge on standards of training, certification and watchkeeping for seafarers (STCW)
- Discuss STCW convention, the layout of the convention, deadlines to meet, glossary of terms and the additional definitions and requirements of the amended STCW convention
- Identify certification requirements covering certification paths and general requirements for officers and ratings
- Recognize certificates and general requirements by rank that include master, chief mate, officer in charge of a navigational watch and ratings forming part of a navigational watch
- Determine seafarer deck, radio operators, chief engineer, second engineer, officer in charge of an engineering watch and electro-technical officer
- Discuss ratings forming part of an engineering watch, able seafarer engine, electro-technical ratings and any other crew member
- Identify other certificates for personnel on any type of ship and apply additional non mandatory training for personnel on tankers and passenger ships
- Recognize education and training issues, simulator training under STCW, english language requirements and the use of distance learning and e-learning
- Review onboard training and assessment, responsibilities of companies, implementation of the ISM Code relevant to STCW, GMDSS (global maritime distress and safety system) certificates and medical fitness standards
- Identify onboard requirements including the certificates and documentary evidence to be carried on board
- Carryout mandatory safety and ship-board familiarization training, on-board training and assessment and seagoing service
- Avoid alcohol and drug consumption and recognize control provisions, penalties and regulations affecting watch-keeping personnel duty
- Apply implications of amendments to STCW holders as well as upgrading and revalidation and additional competence requirements under 2010 STCW

Exclusive Smart Training Kit - H-STK®



Participants of this course will receive the exclusive “Haward Smart Training Kit” (H-STK®). The H-STK® consists of a comprehensive set of technical content which includes **electronic version** of the course materials conveniently saved in a **Tablet PC**.

Who Should Attend

This course provides a basic overview of all significant aspects and considerations of offshore course with STWC (Standards of Training, Certification and Watchkeeping for Seafarers

Training Methodology

All our Courses are including **Hands-on Practical Sessions** using equipment, State-of-the-Art Simulators, Drawings, Case Studies, Videos and Exercises. The courses include the following training methodologies as a percentage of the total tuition hours:-

- 30% Lectures
- 20% Practical Workshops & Work Presentations
- 30% Hands-on Practical Exercises & Case Studies
- 20% Simulators (Hardware & Software) & Videos

In an unlikely event, the course instructor may modify the above training methodology before or during the course for technical reasons.

Course Fee

US\$ 8,000 per Delegate + **VAT**. This rate includes H-STK® (Haward Smart Training Kit), buffet lunch, coffee/tea on arrival, morning & afternoon of each day.

Accommodation


Accommodation is not included in the course fees. However, any accommodation required can be arranged at the time of booking.

Course Certificate(s)


Internationally recognized certificates will be issued to all participants of the course who completed a minimum of 80% of the total tuition hours.

Certificate Accreditations

Certificates are accredited by the following international accreditation organizations: -

- 
British Accreditation Council (BAC)

Haward Technology is accredited by the **British Accreditation Council** for **Independent Further and Higher Education** as an **International Centre**. BAC is the British accrediting body responsible for setting standards within independent further and higher education sector in the UK and overseas. As a BAC-accredited international centre, Haward Technology meets all of the international higher education criteria and standards set by BAC.

- 
The International Accreditors for Continuing Education and Training (IACET - USA)

Haward Technology is an Authorized Training Provider by the International Accreditors for Continuing Education and Training (IACET), 2201 Cooperative Way, Suite 600, Herndon, VA 20171, USA. In obtaining this authority, Haward Technology has demonstrated that it complies with the **ANSI/IACET 2018-1 Standard** which is widely recognized as the standard of good practice internationally. As a result of our Authorized Provider membership status, Haward Technology is authorized to offer IACET CEUs for its programs that qualify under the **ANSI/IACET 2018-1 Standard**.

Haward Technology's courses meet the professional certification and continuing education requirements for participants seeking **Continuing Education Units** (CEUs) in accordance with the rules & regulations of the International Accreditors for Continuing Education & Training (IACET). IACET is an international authority that evaluates programs according to strict, research-based criteria and guidelines. The CEU is an internationally accepted uniform unit of measurement in qualified courses of continuing education.

Haward Technology Middle East will award **3.0 CEUs** (Continuing Education Units) or **30 PDHs** (Professional Development Hours) for participants who completed the total tuition hours of this program. One CEU is equivalent to ten Professional Development Hours (PDHs) or ten contact hours of the participation in and completion of Haward Technology programs. A permanent record of a participant's involvement and awarding of CEU will be maintained by Haward Technology. Haward Technology will provide a copy of the participant's CEU and PDH Transcript of Records upon request.

Course Instructor(s)

This course will be conducted by the following instructor(s). However, we have the right to change the course instructor(s) prior to the course date and inform participants accordingly:



Mr. Sergey Kole, is a **Senior HSE Consultant** with over **25 years** of **onshore and offshore** experience within the **Oil & Gas, Petroleum and Refinery** industry. His expertise widely covers in the areas of **NEBOSH HSE Certificate in Leadership Excellence, Process Safety Management, Hazardous Materials (HAZMAT), Hazard Communication (HAZCOM), Hazard Recognition & Assessment, Risk Control, Cryogenics, MSDS, Liquefied Natural Gas, Hazard Monitoring Techniques, Environmental Pollution Prevention, Hazardous Classification, Packaging & Labelling, Chemical Transportation, Waste Management, Chemical Spill Clean Up, Risk Assessments, Safety & Emergency Plans, Working at Heights, Firefighting, Rescue & Operation, Fall Protection, HSSE Emergency Response & Crisis Management Operations, Confined Space Entry, Construction Health & Safety, HSSE Principles & Practices, HSE Quantitative Risk Assessment (QRA), Root Cause Analysis & Techniques, Hazardous Materials & Chemicals Handling, Chemical Spills, Safety Precaution & Response Action Plan, PSM, PHA, HAZOP, HAZID, Hazard & Risk Assessment, Task Risk Assessment (TRA), Incident Command, Accident & Incident Investigation, Emergency Response Procedures, Job Safety Analysis (JSA), Behavioural Based Safety (BBS), Work Permit & First Aid, Emergency Response**. Further, he is also well versed in **Anatomy of Shipping, Logistics & Transportation Planning Methods, Forecasting Logistics Demands, Visual Network Model, Logistics Operations, Tanker Vetting & Inspection, Marine Vetting & Audit Criteria Manual for Tank Ships, Marine & Ship Vetting, Vetting Process & Marine Safety Criteria, Tanker Vetting for Terminals, Ship Vetting, Marine Terminal Operations & Management, Marine Hazards Prevention & Control, Marine Communication Systems, Marine Safety, Ship Management, Oil Terminal Planning, Vessels Operations, Terminal Management & Support Operations, Oil Spill Contingency & Emergency Response Plan, Qualitative & Quantitative Risk Assessments, Terminal Planning, Oil Tanker Storage Planning, Cargo Transfer Handling, Loading & Discharging, Ballasting, Tank Cleaning, Crude Oil Washing, Ship Handling, Radar Navigation, Navigational Aids, Meteorological Data Review, Sea & Weather Condition Monitoring, ERT Vessel Coordination and Transport & Distribution Carrier**. Further, he is well-versed in **Sea-going Personnel Human Resource Management, Survival Craft & Rescue Boats, Dynamic Positioning, Anti-Piracy Preparedness & Response, Shipping Maintenance System, Oil & Chemical Tanker, Liquefied Gas Tanker, Inert Gas System, Crude Oil Tanker & Gas Carrier, Offshore Logistics & Supply Management, Marine Fleet Management & Operations, International Maritime Conventions & Codes, Marine Radar, Port Traffic Control Systems & Instrumentation, H²S Hazard Awareness, Firefighting, Medical Care Onboard, Carriage of Dangerous & Hazardous Substances and Ballast Water & Sediment Management**.

During his career life, Mr. Sergey has gained his technical and marine expertise through various challenging key positions such as being the **Project Manager, Account Manager, Commercial Sales Manager, Manager, Sales Engineer, Project Specialist, Senior HR Consultant, Senior Lecturer, Senior Consultant/Trainer, Business Consultant, Captain, Operations Director, Project Manager, Port Supervisor, Master of General Cargo Ship, Master of Container Ship, Chief Officer, Marine Operations Specialist, Marine Coordinator, On-call Duty Officer, Crewing Consultant, 2nd Officer, Ship Chandler and Senior Instructor/Trainer** for several international companies such as **ZADCO, AMEC Foster Wheeler, Fircroft Engineering Services, Ltd., Rusalina Yacht Company, Van Oord Offshore, Exxon Neftegaz Ltd (ENL), Jr Shipping, Carisbrooke Shipping, Unicorn Petrol ve Kimya, Q Shipping BV, m/v Tradeport, Miedema Shipping CV, Rah Management BV, Petrobulk Maritime Inc., Empross Lines Ship Management, Melcard Ltd., Aquarian Shell Marine Inc., Mercy Baaba and Square Ltd.**

Mr. Sergey has a **Bachelor's degree in Navigation in Nautical Studies** from the **Kiev State Academy of Water Transport, Ukraine** and holds a **Master Mariner (Unlimited) Certificates of Equivalent Competency** from the **MCA, UK and NSI, Netherlands**. Further, he is a **Certified Instructor/Trainer, a Certified Internal Verifier/Assessor/Trainer** by the **Institute of Leadership & Management (ILM)** and has delivered various trainings, courses, seminars, workshops and conferences internationally.

Course Program

The following program is planned for this course. However, the course instructor(s) may modify this program before or during the course for technical reasons with no prior notice to participants. Nevertheless, the course objectives will always be met:

Day 1

| | |
|-------------|---|
| 0730 – 0800 | Registration & Coffee |
| 0800 – 0815 | Welcome & Introduction |
| 0815 – 0830 | PRE-TEST |
| 0830 – 0930 | The STCW Convention Layout of the Convention • Deadlines to Meet |
| 0930 – 0945 | Break |
| 0945 – 1030 | The STCW Convention (cont'd) Glossary of Terms • Additional Definitions & Requirements of the Amended STCW Convention |
| 1030 – 1130 | Certification Requirements STCW Certificates • Certificates • Certification Paths |
| 1130 – 1245 | Break |
| 1245 – 1420 | Certification Requirements (cont'd) General Requirements for Officers • General Requirements for Ratings |
| 1420 – 1430 | Recap |
| 1430 | Lunch & End of Day One |

Day 2

| | |
|-------------|--|
| 0730 – 0930 | Certificates & General Requirements by Rank Master • Chief Mate • Officer in Charge of a Navigational Watch • Ratings Forming Part of a Navigational Watch • Able Seafarer Deck |
| 0930 – 0945 | Break |
| 0945 – 1100 | Certificates & General Requirements by Rank Master (cont'd) Radio Operators • Chief Engineer • Second Engineer |
| 1100 – 1230 | Certificates & General Requirements by Rank Master (cont'd) Officer in Charge of an Engineering Watch • Electro-Technical Officer • Ratings Forming Part of an Engineering Watch |
| 1230 – 1245 | Break |
| 1245 – 1420 | Certificates & General Requirements by Rank Master (cont'd) Able Seafarer Engine • Electro-Technical Ratings • Any Other Crew Member |
| 1420 – 1430 | Recap |
| 1430 | Lunch & End of Day Two |

Day 3

| | |
|-------------|--|
| 0730 – 0930 | Other Certificates For Personnel on Any Type of Ship • Additional Non Mandatory Training |
| 0930 – 0945 | Break |
| 0945 – 1100 | Other Certificates (cont'd) For Personnel on Tankers • For Personnel on Passenger Ships |

| | |
|-------------|---|
| 1100 – 1230 | Training Issues <i>Education & Training Issues • Simulator Training Under STCW • English Language Requirements • The Use of Distance Learning & E-Learning • Onboard Training & Assessment</i> |
| 1230 – 1245 | <i>Break</i> |
| 1245 – 1420 | Training Issues (cont'd) <i>Responsibilities of Companies • Implementation of the ISM Code Relevant to STCW • GMDSS (Global Maritime Distress & Safety System) Certificates • Medical Fitness Standards</i> |
| 1420 – 1430 | Recap |
| 1430 | <i>Lunch & End of Day Three</i> |

Day 4

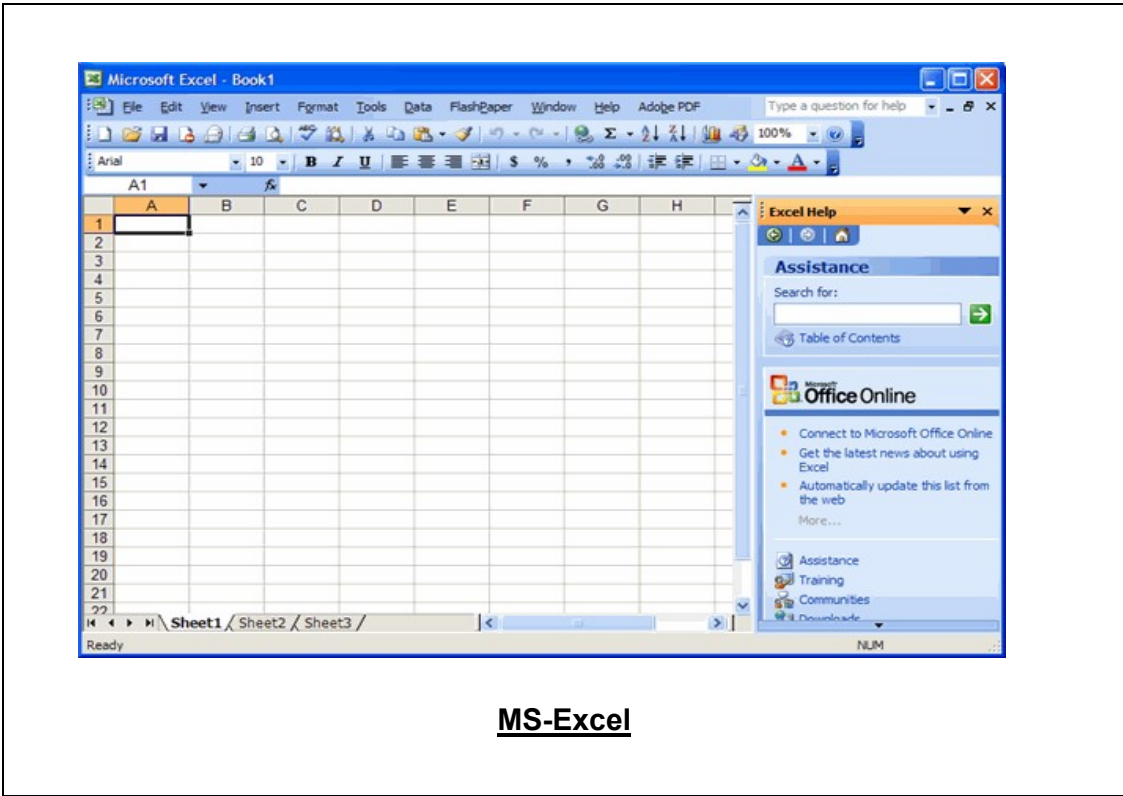
| | |
|-------------|--|
| 0730 – 0930 | On Board Requirements <i>Certificates & Documentary Evidence to be Carried on Board • Mandatory Safety & Ship-Board Familiarization Training</i> |
| 0930 – 0945 | <i>Break</i> |
| 0945 – 1100 | On Board Requirements (cont'd) <i>On-Board Training & Assessment • Seagoing Service</i> |
| 1100 – 1230 | On Board Requirements (cont'd) <i>Alcohol & Drug Consumption • Control Provisions</i> |
| 1230 – 1245 | <i>Break</i> |
| 1245 – 1420 | On Board Requirements (cont'd) <i>Penalties • Regulations Affecting Watch-Keeping Personnel Duty</i> |
| 1420 – 1430 | Recap |
| 1430 | <i>Lunch & End of Day Three</i> |

Day 5

| | |
|-------------|---|
| 0730 – 0930 | Implications of Amendments to STCW Holders <i>Upgrading & Revalidation</i> |
| 0930 – 0945 | <i>Break</i> |
| 0945 – 1100 | Implications of Amendments to STCW Holders (cont'd) <i>Additional Competence Requirements Under 2010 STCW</i> |
| 1100 – 1230 | Implications of Amendments to STCW Holders (cont'd) <i>Master & Deck Department</i> |
| 1230 – 1245 | <i>Break</i> |
| 1245 – 1345 | Implications of Amendments to STCW Holders (cont'd) <i>Engine Department</i> |
| 1345 – 1400 | Course Conclusion |
| 1400 – 1415 | POST-TEST |
| 1415 – 1430 | <i>Presentation of Course Certificates</i> |
| 1430 | <i>Lunch & End of Course</i> |

Practical Sessions

Client shall provide each participant with a computer that includes MS Excel applications and internet for the practical sessions during the course, free of charge to Haward Technology.



MS-Excel

Course Coordinator

Mari Nakintu, Tel: +971 2 30 91 714, Email: mari1@haward.org